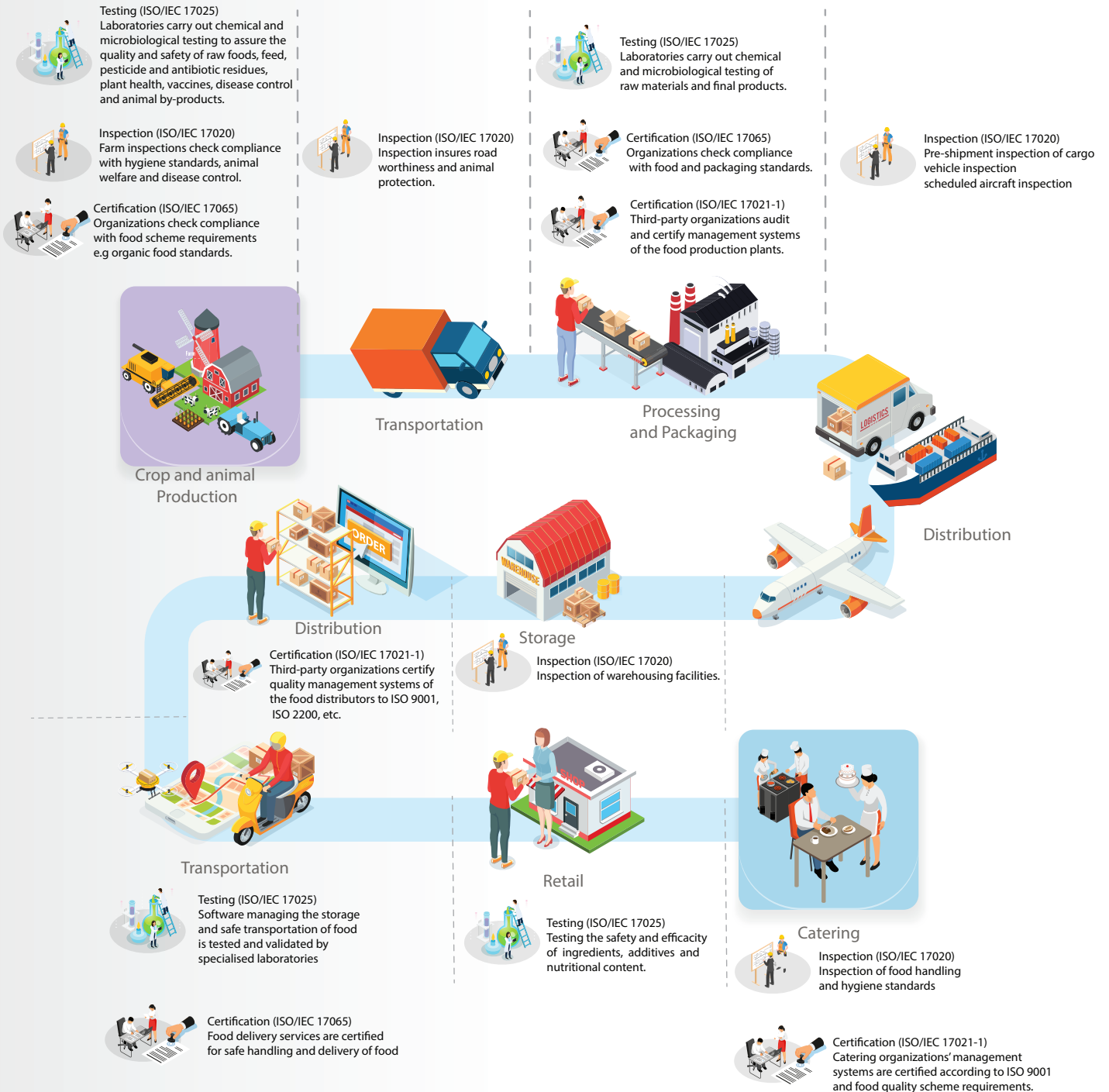


Accreditation in the Food Supply Chain



The production of food involves complex supply chains and processes requiring different types of accredited conformity assessment activities. A number of Food Schemes require certification for the production of crops, animal feed and practices involved with sourcing, harvest and slaughter. Industry and regulators require inspection and sample testing for other activities like storage, treatment and processing, and in turn packaging and distribution. The storage and display of food products in the retail environment also benefits from certification activities of stores' services, processes and management systems.